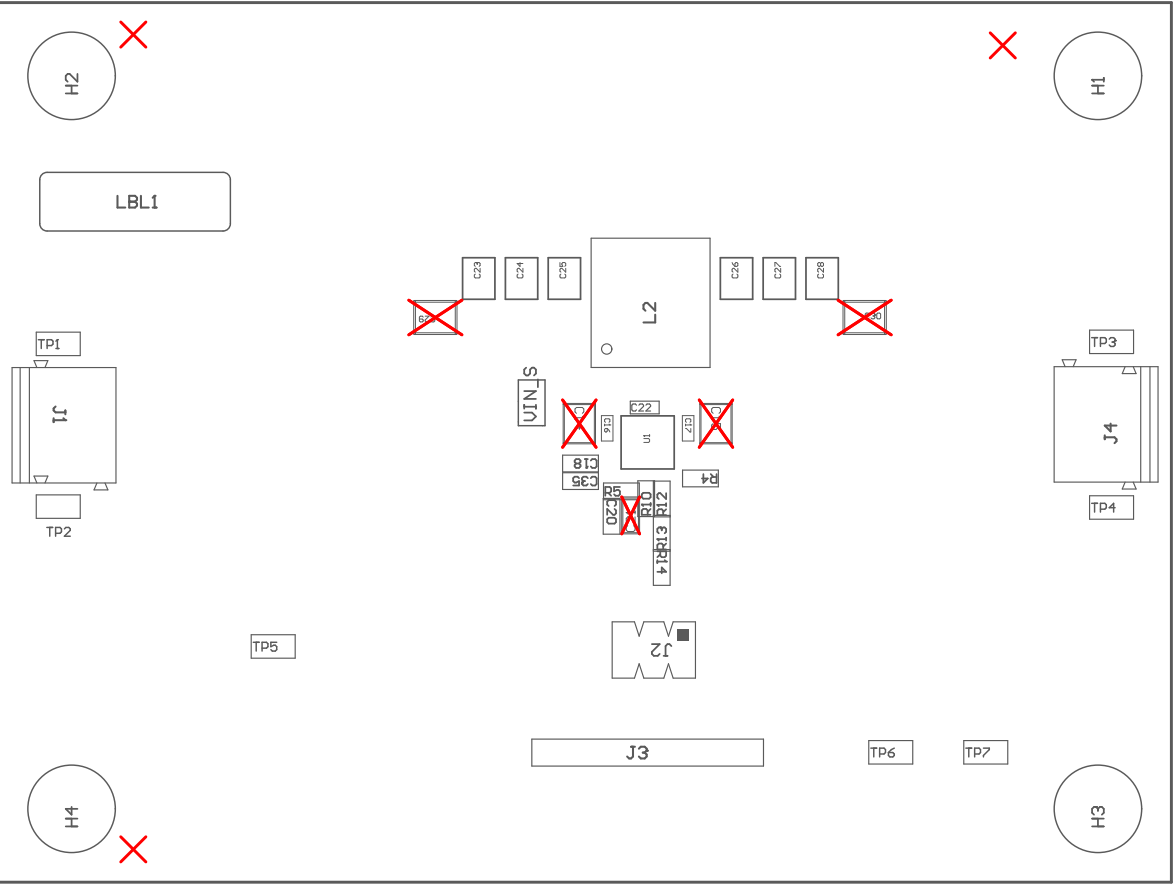
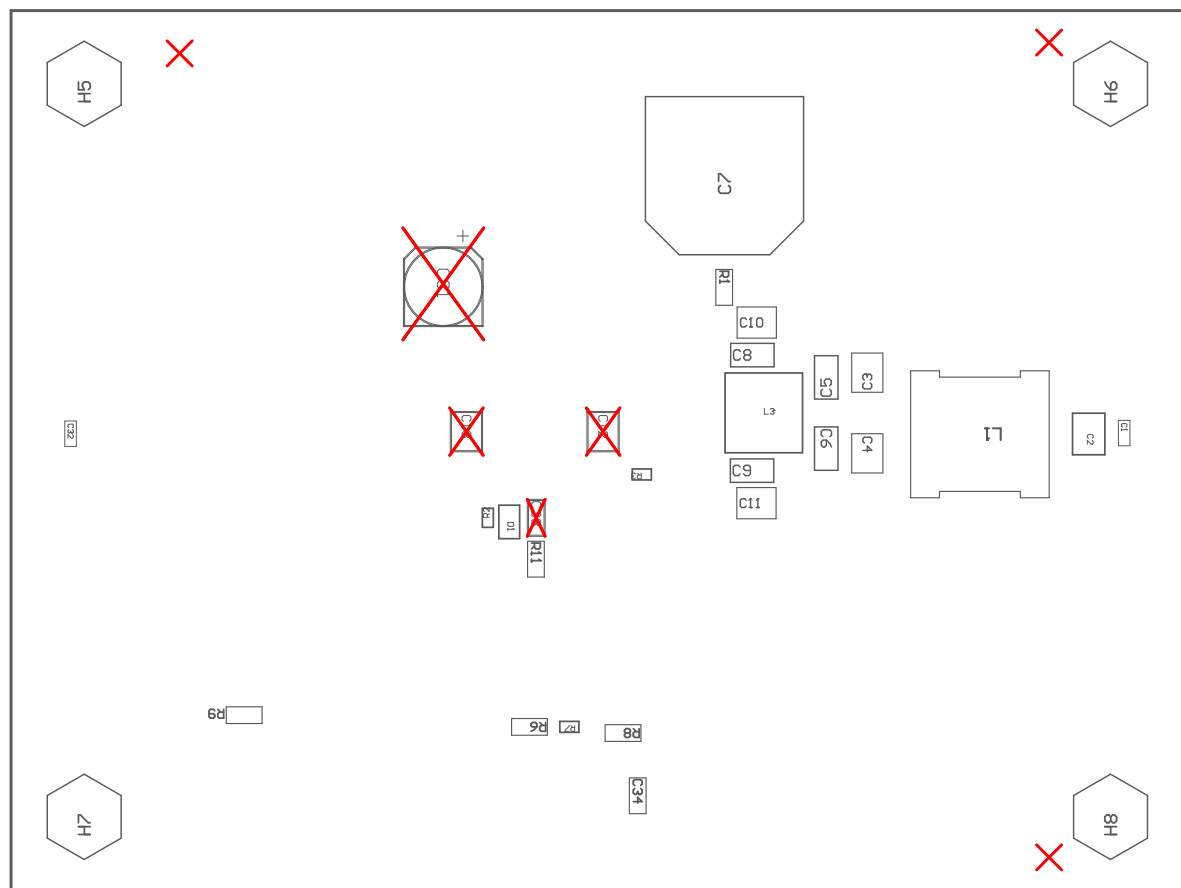


ZZ1 ■These assemblies are ESD sensitive, ESD precautions shall be observed.
ZZ2 ■These assemblies must be clean and free from flux and all contaminants. Use of no clean flux is not acceptable.
ZZ3 ■These assemblies must comply with workmanship standards IPC-A-610 Class 2, unless otherwise specified.
ZZ4 ■Assemble L1 with dot/bar/WE logo closer to the L1 marking
ZZ5 ■Install Shunt Jumper SH-J1 onto J3 pins 4-5 (EN-VIN)
ZZ6 ■Install Shunt Jumper SH-J2 onto J3 pins 7-8 (MODE/SYNC-GND)
ZZ7 ■Install Shunt Jumper SH-J3 onto J2 pins 5-6 (sets output voltage to -12V)
ZZ8 ■Install label in silkscreened box after final wash. Text shall be 8 pt font. Text shall be per the Label Table in the PDF schematic.



COMPONENTS MARKED 'DNP' SHOULD NOT BE POPULATED.
ASSEMBLY VARIANT: 001

PCB VIEWED FROM TOP SIDE	BOARD #: SR112	REV: A	SUN REV: Not in version control
	TID #: N/A		
PLOT NAME = Top Assembly Drawing	GENERATED : 12/12/2025 3:42:20 PM	TEXAS INSTRUMENTS	



COMPONENTS MARKED 'DNP' SHOULD NOT BE POPULATED.
 ASSEMBLY VARIANT: 001

PCB VIEWED FROM BOTTOM SIDE	BOARD #: SR112	REV: A	SUN REV: Not in version control
	TID #: N/A		
PLOT NAME = Bottom Assembly Drawing	GENERATED : 12/12/2025 3:42:20 PM	TEXAS INSTRUMENTS	